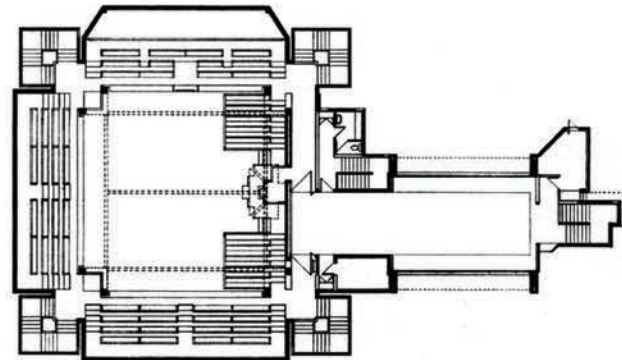
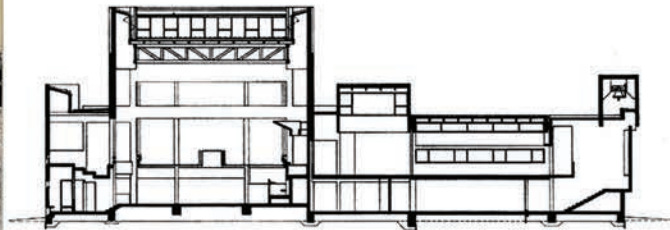


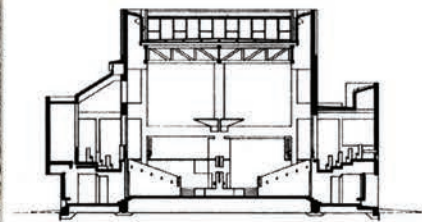
Ground floor plan



First floor plan



Section



Section



7

The congregation at Rochester chose Kahn from six architects (Williams, 1991: 340). The design process was protracted with different variations including some sympathetic to Unity Temple but eventually realised as a rectangular auditorium with “light towers” rising from each of

the four corners of the cruciform-shaped roof, and surrounded by a passage and rooms on two storeys (Fig 4). With the emphasis by both Wright and Kahn on an appropriate meeting and sacral space, a spire had proved superfluous in both churches.

6 VC Morris Gift shop, San Francisco, 1948 (McCarter, R Frank Lloyd Wright. London: Phaidon, 2005).

7 NGK Welkom-Wes. Clockwise from top left: site plan (Uytenbogaardt Papers); plans and sections (Nuttall, 2005: 64); photograph from north (Uytenbogaardt Papers).